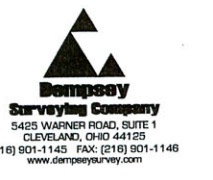


ALTA/ACSM LAND TITLE SURVEY FOR
CALEAST NAT, LLC;
CALEAST INDUSTRIAL INVESTORS, LLC;
LASALLE INVESTMENT MANAGEMENT, INC.;
 their respective partners/members/shareholders,
 subsidiaries, affiliates, and attorneys, and their
 respective successors and assigns, and
LAWYERS TITLE INSURANCE COMPANY

SITUATED IN THE CITY OF MIDDLEBURG HEIGHTS, COUNTY OF CUYAHOGA, STATE OF OHIO AND KNOWN AS BEING SUBLT NOS. 7-R AND 8-R IN THE ENGLEWOOD INDUSTRIAL PARK RESUBDIVISION OF PART OF ORIGINAL MIDDLEBURG TOWNSHIP LOTS NOS. 2, 4, 5, AND 6 IN SECTION 13 AS SHOWN BY THE RECORDED PLAT IN VOLUME 209 OF MAPS, PAGE 42 OF CUYAHOGA COUNTY RECORDS

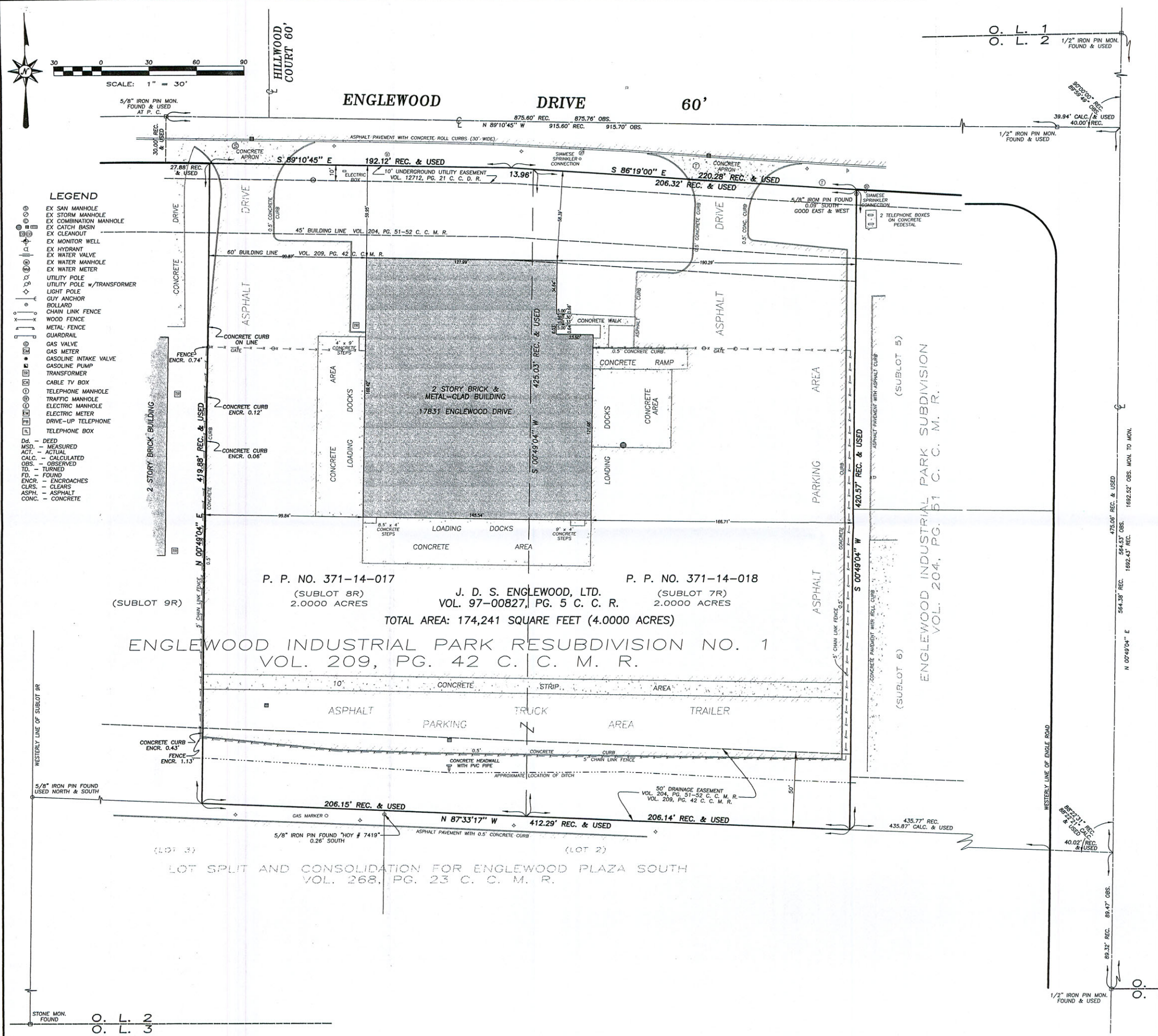
SURVEYOR'S CERTIFICATION
 I HEREBY CERTIFY TO (a) CALEAST NAT, LLC, CALEAST INDUSTRIAL INVESTORS, LLC, LASALLE INVESTMENT MANAGEMENT, INC.; THEIR RESPECTIVE PARTNERS/MEMBERS/SHAREHOLDERS, SUBSIDIARIES, AFFILIATES, AND ATTORNEYS, AND THEIR RESPECTIVE SUCCESSORS AND ASSIGNS, AND (b) LAWYERS TITLE INSURANCE COMPANY THAT THIS MAP OR PLAT AND THE SURVEY ON WHICH IT IS BASED WERE MADE IN ACCORDANCE WITH THE "MINIMUM STANDARD DETAIL REQUIREMENTS FOR ALTA/ACSM LAND TITLE SURVEYS", JOINTLY ESTABLISHED AND ADOPTED BY ALTA, ACSM AND NSPS IN 1999. PURSUANT TO THE ACCURACY STANDARDS AS ADOPTED BY ALTA, NSPS, AND ACSM AND IN EFFECT ON THE DATE OF THIS CERTIFICATION, UNDERSIGNED FURTHER CERTIFIES THAT THE POSITIONAL UNCERTAINTIES RESULTING FROM THE SURVEY MEASUREMENTS MADE ON THE SURVEY DO NOT EXCEED THE ALLOWABLE POSITIONAL TOLERANCE.

Christopher J. Dempsey
 CHRISTOPHER J. DEMPSEY
 PROFESSIONAL SURVEYOR NO. 6914
 DATE OF SURVEY: MARCH 9, 2005
 DATE SIGNED: MARCH 15, 2005



LAWYERS TITLE INSURANCE CORPORATION
 ORDER NO. OH127789LN
 EFFECTIVE DATE: FEBRUARY 22, 2005 at 6:59 A.M.
 NOTES REGARDING SCHEDULE B, SECTION 2:

- ITEM 8: RESERVATIONS, RESTRICTIONS, COVENANTS, LIMITATIONS, EASEMENTS AND/OR OTHER CONDITIONS AS SHOWN ON PLAT RECORDED IN PLAT VOLUME 204 PAGE 51, OF THE CUYAHOGA COUNTY RECORDS. PLOTTED AS SHOWN.
- ITEM 9: RESERVATIONS, RESTRICTIONS, COVENANTS, LIMITATIONS, EASEMENTS AND/OR OTHER CONDITIONS AS SHOWN ON PLAT RECORDED IN PLAT VOLUME 209 PAGE 42, OF THE CUYAHOGA COUNTY RECORDS. PLOTTED AS SHOWN.
- ITEM 10: UNDERGROUND EASEMENT TO THE CLEVELAND ELECTRIC ILLUMINATING COMPANY, FILED FOR RECORD MAY 27, 1970 IN VOLUME 12712 PAGE 21 OF THE CUYAHOGA COUNTY RECORDS. PLOTTED AS SHOWN.
- ITEM 11: RESERVATIONS, RESTRICTIONS, COVENANTS, LIMITATIONS, EASEMENTS, AND/OR CONDITIONS, AS ESTABLISHED IN INSTRUMENT FILED FOR RECORD SEPTEMBER 29, 1972 IN VOLUME 12974 PAGE 871, OF THE CUYAHOGA COUNTY RECORDS. AFFECTS ALL OF CAPTION.



Drawing File: K:\7200-7299\7227\7227.dwg Mar 15, 2005 - 9:19am

PRINTED
MAR 15 2005